



SciLution

บริษัท ไซลิวชั่น จำกัด Scilution Co., Ltd.

www.scilution.co.th / www.scilution.net / www.scilution.com

Tel : 02 964 8018 | Line ID : @scilution

Heating and drying ovens

COMMUNICATION. COMFORT, SIMPLY GREAT.



UNIVERSAL OVEN U

PASS-THROUGH OVEN UFP TS

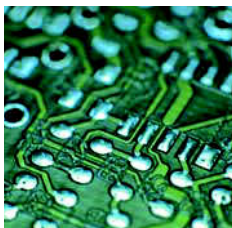
PARAFFIN OVEN UNpa

STERILISER S

VACUUM OVEN VO

COOLED VACUUM OVEN VOcool

100% ATMOSAFE. MADE IN GERMANY.



Simply boundless. Boundlessly simple.

Drying, heating, ageing, testing, sterilising,
burning-in, testing, curing, storing. 100% AtmoSAFE.

From very small to very large! 32 litres or 749 litres chamber volume? Standard applications or high demand for functionality, programming and documentation? In any case, all Memmert heating and drying ovens feature user-friendliness and state-of-the-art communication interfaces as a basic. Each individual appliance is tested according to the strict requirements of DIN 12 880: 2007-05 and is equipped with a maximum of safety functions. Each individual Memmert heating and drying oven is 100% AtmoSAFE.



GENERATION 2012

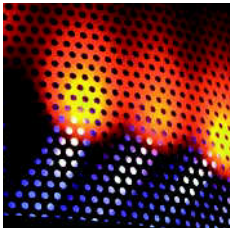
Universal Oven UN and UF with SingleDISPLAY
Universal Oven UNplus and UFplus with Twin DISPLAY
Natural convection or forced ventilation
AtmoCONTROL software

Model sizes:

30 / 55 / 75 / 110 / 160 / 260 / 450 / 750

+30° C up to +300° C

UNIVERSAL OVENS U The all-round genius among the heating ovens cover a multitude of applications, ideally at temperatures above +50 °C. Without compromises! Thanks to two model variants and eight sizes, optionally with natural or forced convection, industry, science and research institutes will find a heating and drying oven which combines top precision and safety with optimal operating comfort.

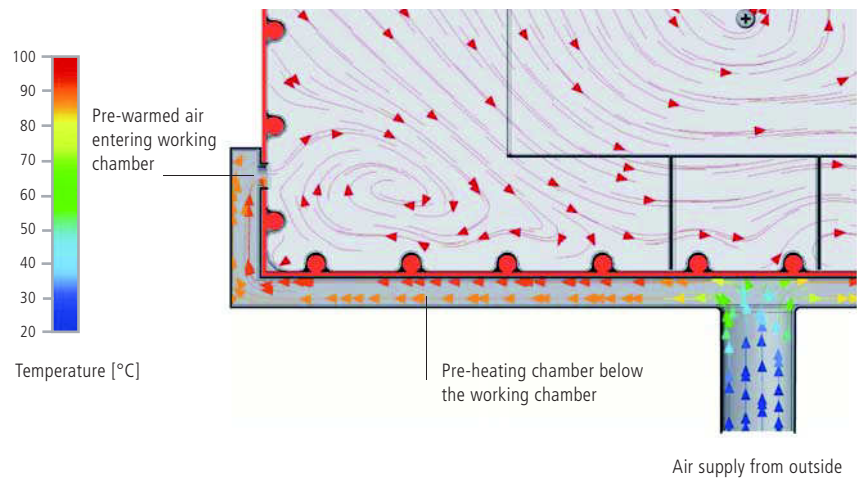


Defined and programme-controlled fan speed

Air exchange rates and air flap position can be controlled electronically at the ControlCOCKPIT. More inlet and outlet openings lead to a higher air exchange and reduced drying times. Various applications recommend or even require controlled ventilation. When drying powder, sand or corn, reducing the ventilation prevents undesired swirls. Other applications like testing of wires or cables demand for defined air exchange rates. UFplus appliances feature easy programming of temperature and air exchange rates with the AtmoCONTROL software.

Fresh air is preheated

Temperature deviations caused by fresh air can influence sample characteristics or prolong drying. In Memmert universal ovens, the fresh air is therefore fed through a pre-heating chamber and introduced into the working chamber.



Intended purpose as a medical device:

Heating ovens UF and UFplus are applied for heating of non-sterile fabrics and covers.



Options	30	55	75	110	160	260	450	750
Full-sight glass door (4 insulating glass)								B0
Chamber modification for the application of reinforced perforated stainless steel shelves or stainless steel grids (bearing rails mounted in the working chamber) – includes replacement of 2 standard grids by 2 reinforced grids				–				K1
Fresh-air filter (filtration efficiency 80 %) mounted at the bottom (for UF/UFplus)								R8
Interior lighting (up to size 260: 15 W, sizes 450/750: 2 x 15 W)								R0
Interior socket (can only be ordered with limited temperature-range – max. +70 °C) current carrying ampacity 230 V, 2.2 A can be switched off with the On/Off switch, cannot be switched individually								R3
Interior nearly gastight								K2
Ditto, with possibility for gas inlet/outlet through 2 tubes with ball valves								K3
Entry port, 23 mm clear diameter, for introducing connections at the side, can be closed by flap, standard positions				left centre/centre left centre top right centre/centre right centre top				F0 F1 F2 F3
Entry port, 23 mm clear diameter for introducing connections at the side, can be closed by flap in special positions (please, state location)				left right rear				F4 F5 F6
Entry port, 14 mm clear diameter, can be closed by flap, in special positions at the back (please, state location)								D6
Entry port, 38 mm clear diameter, can be closed by flap, in special positions at the back (please, state location)								F7
Entry port, 57 mm clear diameter, can be closed by flap, in special positions at the back (please, state location)								F8
Entry port, 100 mm clear diameter, can be closed by flap, in special positions at the back (please, state location)								F9
Entry port, 120 mm clear diameter, can be closed by flap, in special positions at the back (please, state location)								D7
4 – 20 mA current loop interface (0 to +310 °C \pm 4 – 20 mA) Temperature controller actual value Temperature of a Pt100 sensor positioned flexibly in chamber (max. 1 SingleDISPLAY, max. 3 TwinDISPLAY)								V3 V6
Fan speed monitoring – optional for UFplus only								V4
Works calibration certificate for 3 temperatures: +100 °C, +160 °C, +220 °C								D00128

Accessories	30	55	75	110	160	260	450	750
Stainless steel grids (standard equipment)	E28884	E20164		E20165		E28891	E20182	
Reinforced stainless steel grid, max. loading 60 kg (from size 450 only in connection with option K1)		–		E29767		E29766	E20185	
Perforated stainless steel shelf	B29727	B03916		B00325		B29725	B00328	
Reinforced perforated stainless steel shelves, max. loading 60 kg (from size 450 only in connection with option K1)		–		B29777		B29724	B00844	
Stainless steel tray (non-perforated) 15 mm rim (may affect the temperature distribution)	E02070	E02072		E02073		E29726	E02075	
Bottom drip tray (may affect the temperature distribution)	B04356	B04358		B04359		B29722	B04362	
Wall bracket (tubular frame for wall mounting)	B29755	B29756	B29757	B29758	B29759		–	
Guarantee extension by 1 year				GA1Q5			GA2Q5	